



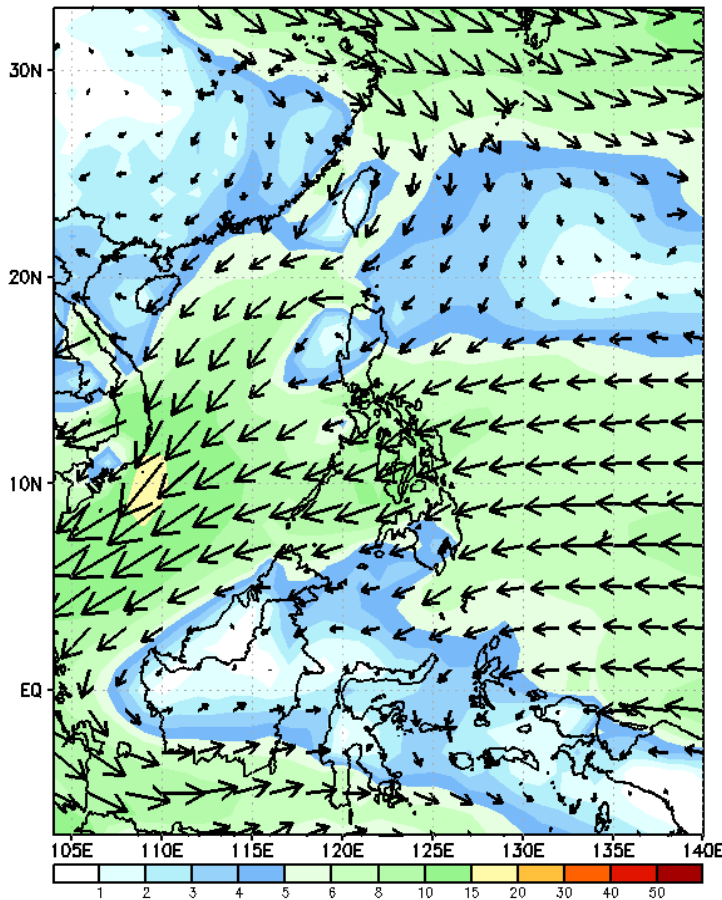
Week 1 & Week 2 Forecast for the Philippines using GEFS Model



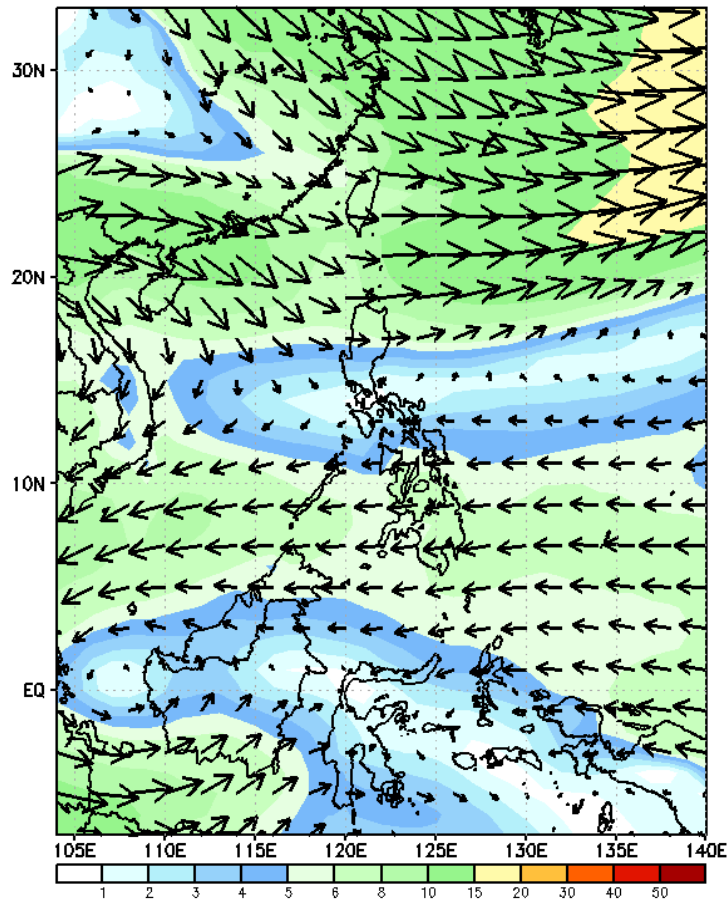
GEFS Week-1 Wind Forecasts:

Week 1: Mar 17-23, 2025

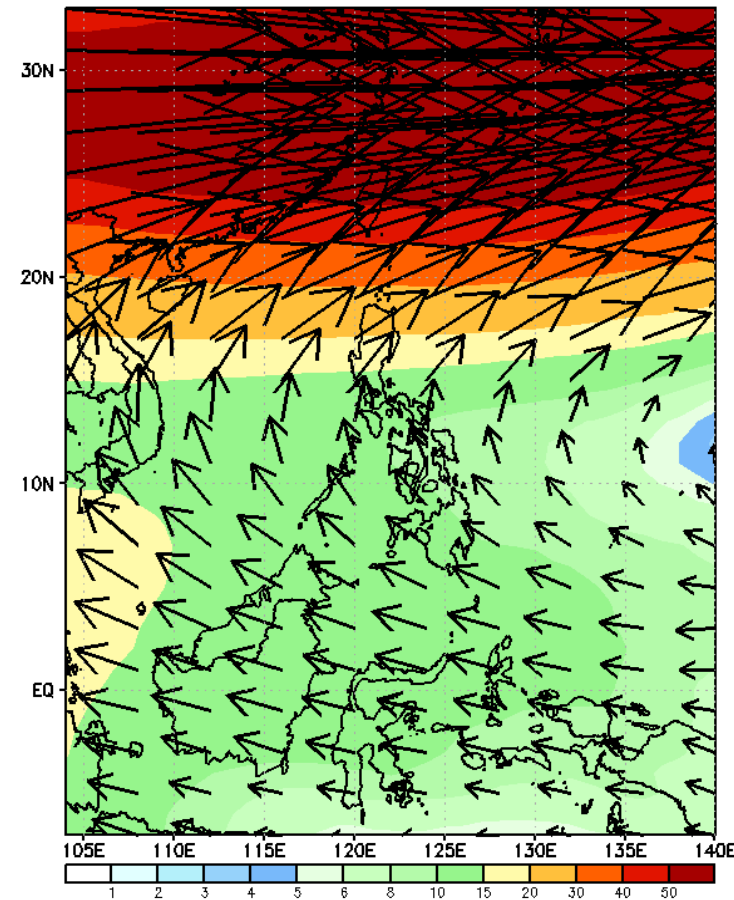
GEFS Week-1 850-hPa Wind Total
Valid: 20250317 - 20250323



GEFS Week-1 700-hPa Wind Total
Valid: 20250317 - 20250323

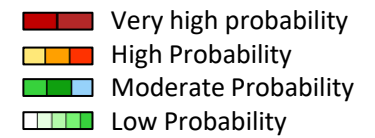


GEFS Week-1 200-hPa Wind Total
Valid: 20250317 - 20250323



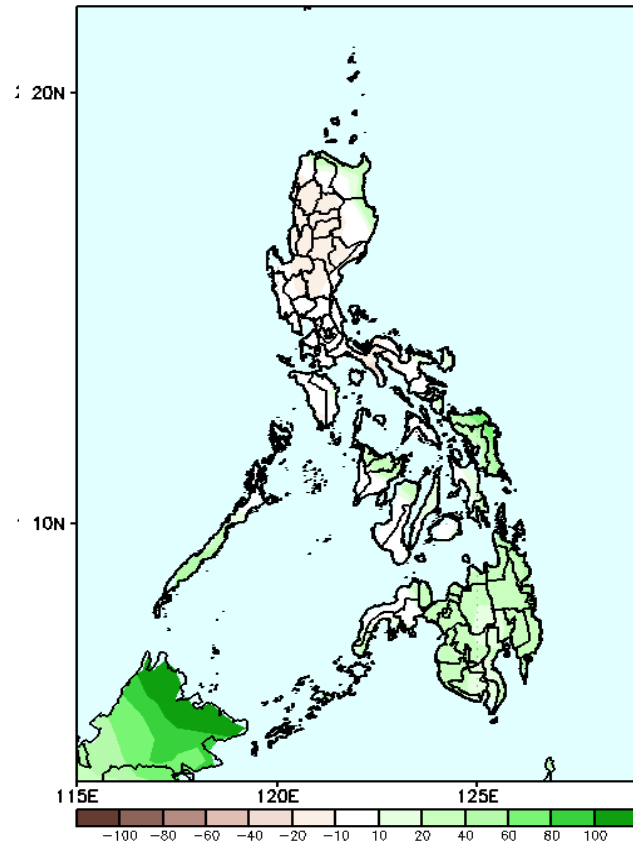
Northeast Monsoon affecting Northern and Central Luzon while Easterlies affecting the rest of the country during the forecast period

Precipitation Anomaly and Exceedance Probability > 25/50 mm



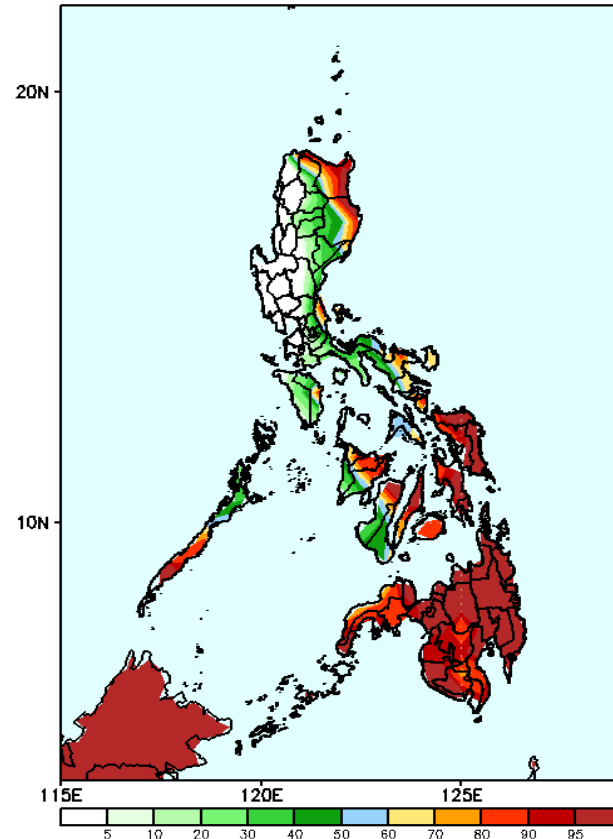
Week 1: Mar 17-23, 2025

GEFS Week-1 Precip Anomaly
Valid: 20250317 - 20250323



Increase of rainfall of 20-40mm is expected over Palawan, most of Visayas and Mindanao.

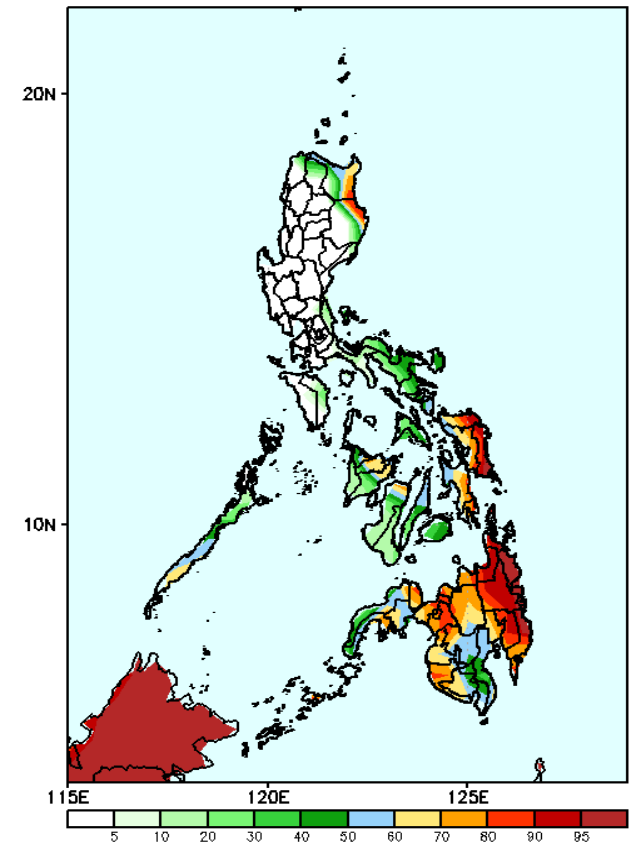
GEFS Week-1 Exceedance Prob. > 25mm
Valid: 20250317 - 20250323



Probability to Exceed 25mm

- High to very high over eastern part of Cagayan and Isabela, most parts of Bicol, Aklan, Capiz, Eastern Visayas, and most of Mindanao;
- Moderate to high over Apayao, the rest of Cagayan and Isabela, Quezon, Occidental Mindoro, Palawan, and the rest of Visayas;

GEFS Week-1 Exceedance Prob. > 50mm
Valid: 20250317 - 20250323



Probability to Exceed 50mm

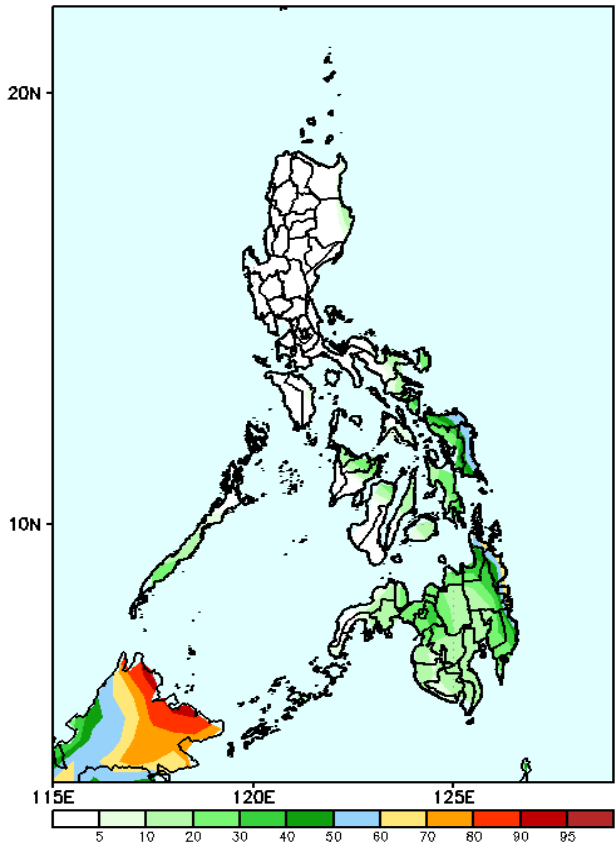
- High to very high over Eastern Samar and Easter Mindanao;
- Moderate to high over the easternmost of Cagayan and Isabela, the rest of Eastern Visayas and Mindanao, Capiz, Aklan, Northern portions of Negros Occidental and Cebu, Southern Palawan, and Sorsogon;
- Low to moderate over the rest of Visayas and Luzon.

Exceedance Probability > 100/150/200 mm

- Very high probability
- High Probability
- Moderate Probability
- Low Probability

Week 1: Mar 17-23, 2025

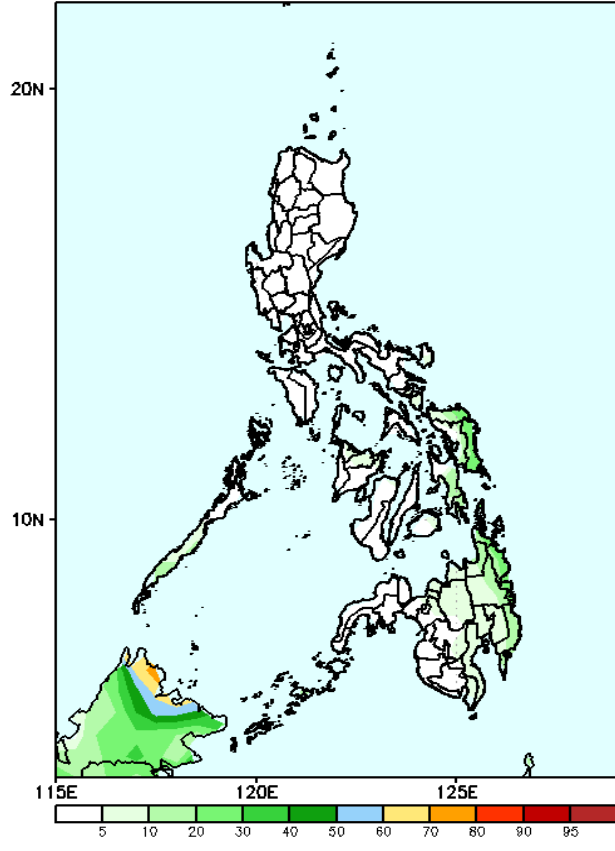
GEFS Week-1 Exceedance Prob. > 100mm
Valid: 20250317 - 20250323



Probability to Exceed 100mm

- Moderate to a high over the eastern portion of Caraga;
- Low to moderate over Southern Luzon and the rest of Visayas and Mindanao;
- Low over the rest of Luzon.

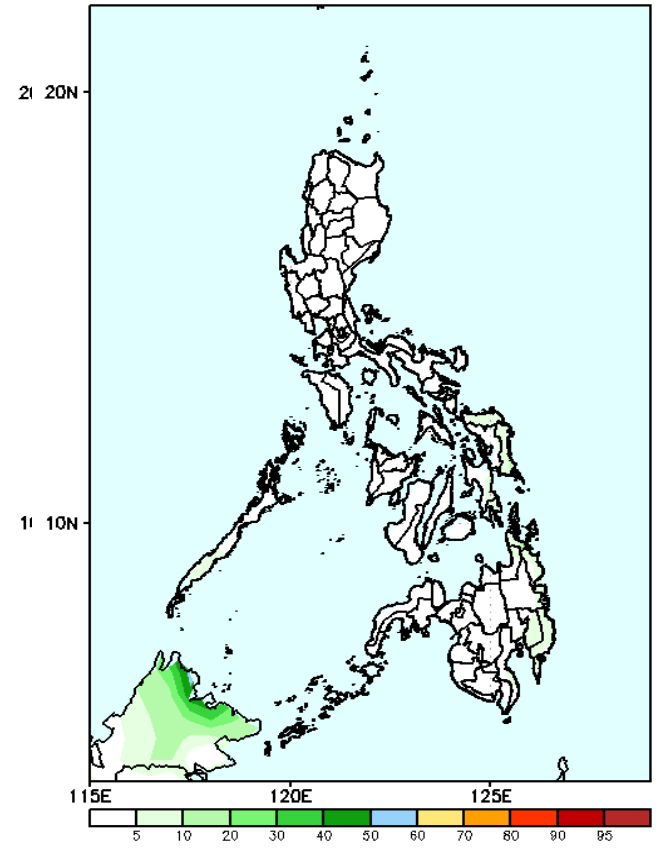
GEFS Week-1 Exceedance Prob. > 150mm
Valid: 20250317 - 20250323



Probability to Exceed 150mm

- Low across the country.

GEFS Week-1 Exceedance Prob. > 200mm
Valid: 20250317 - 20250323



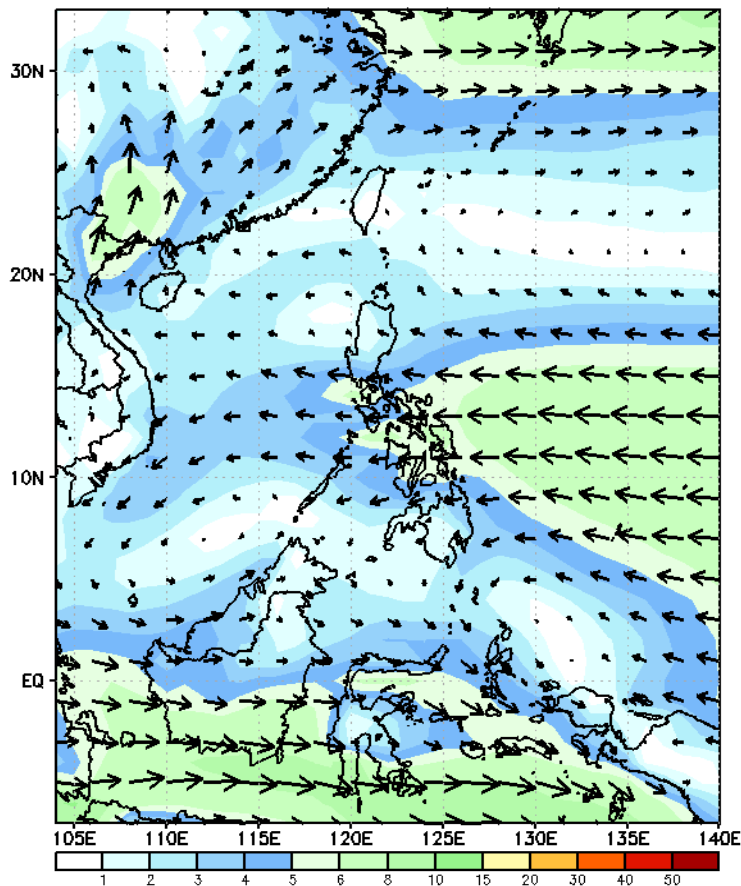
Probability to Exceed 200mm

- Low across the country.

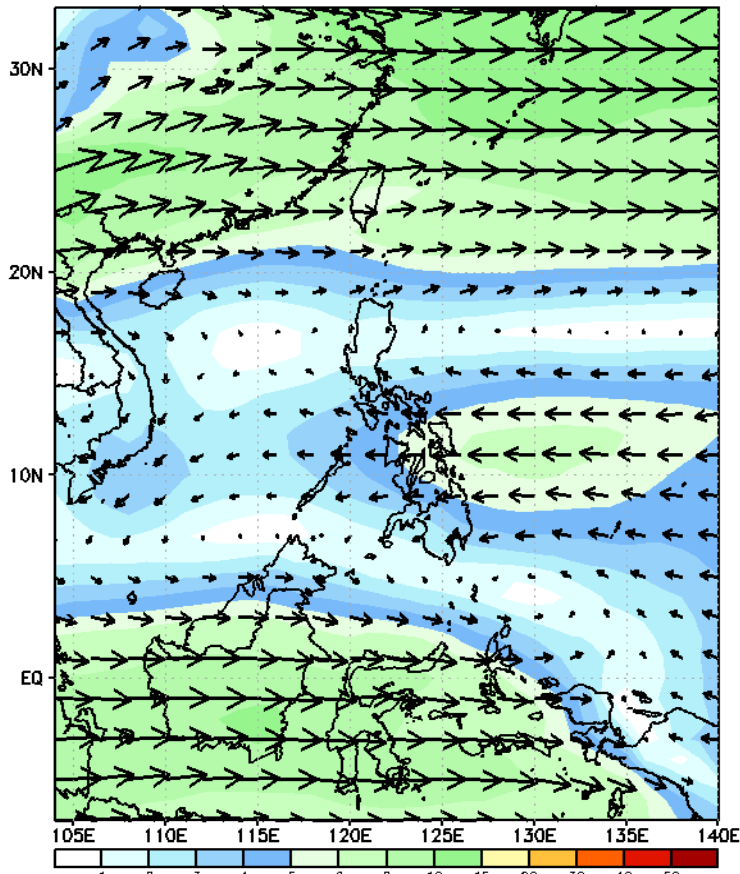
GEFS Week-2 Wind Forecasts:

Week 2: Mar 24-30,, 2025

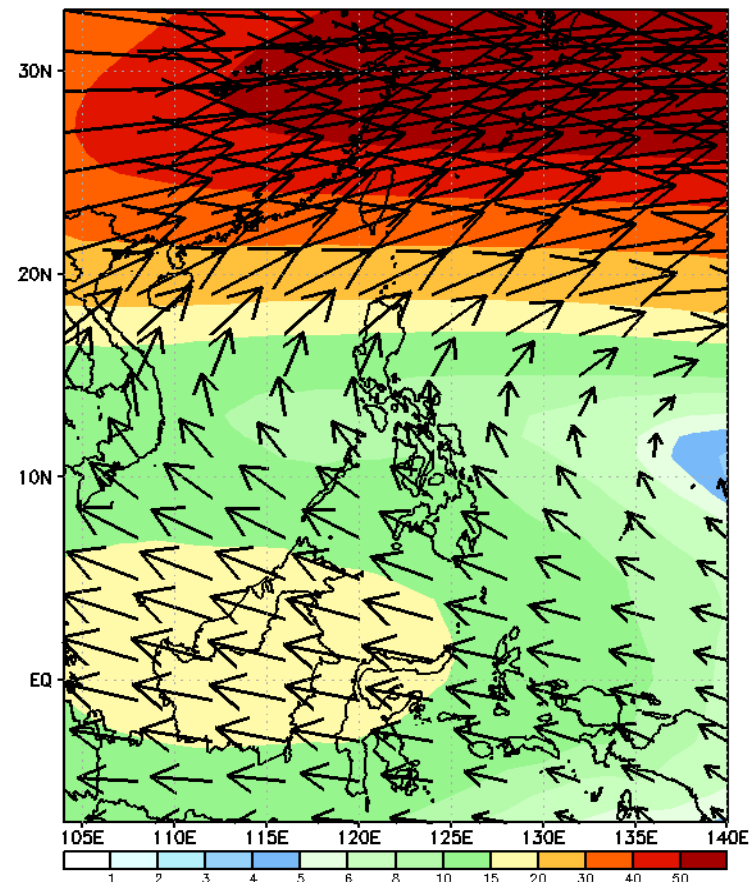
GEFS Week-2 850-hPa Wind Total
Valid: 20250324 - 20250330



GEFS Week-2 700-hPa Wind Total
Valid: 20250324 - 20250330

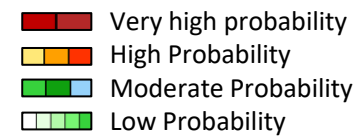


GEFS Week-2 200-hPa Wind Total
Valid: 20250324 - 20250330



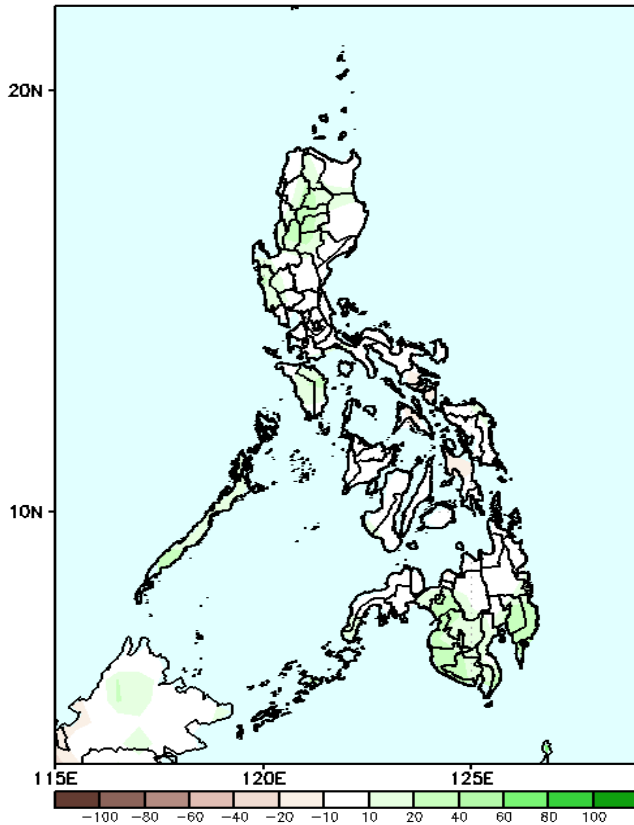
Northeast Monsoon affecting Extreme Northern Luzon while Easterlies affecting the rest of the country during the forecast period

Precipitation Anomaly and Exceedance Probability > 25/50 mm



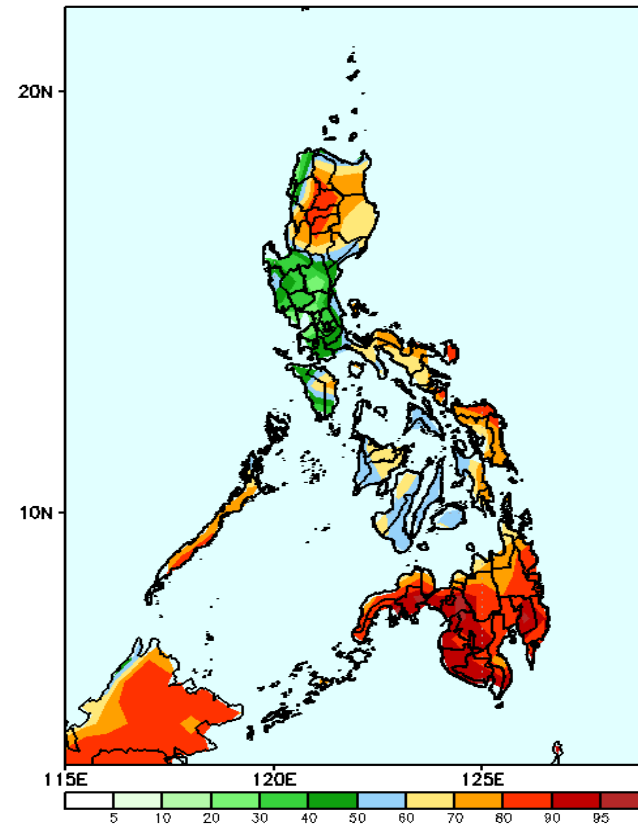
Week 2: Mar 24-30,, 2025

GEFS Week-2 Precip Anomaly
Valid: 20250324 - 20250330



Increase of rainfall of 20-60mm is expected over some areas in Luzon and Mindanao.

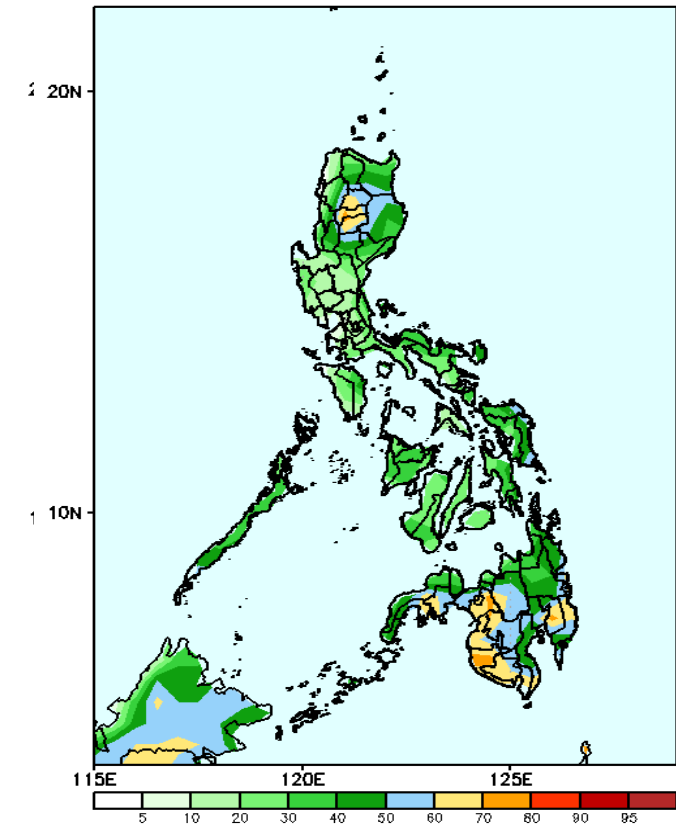
GEFS Week-2 Exceedance Prob. > 25mm
Valid: 20250324 - 20250330



Probability to Exceed 25mm

- High to very high over Mindanao;
- Moderate to high over the rest of the country

GEFS Week-2 Exceedance Prob. > 50mm
Valid: 20250324 - 20250330



Probability to Exceed 50mm

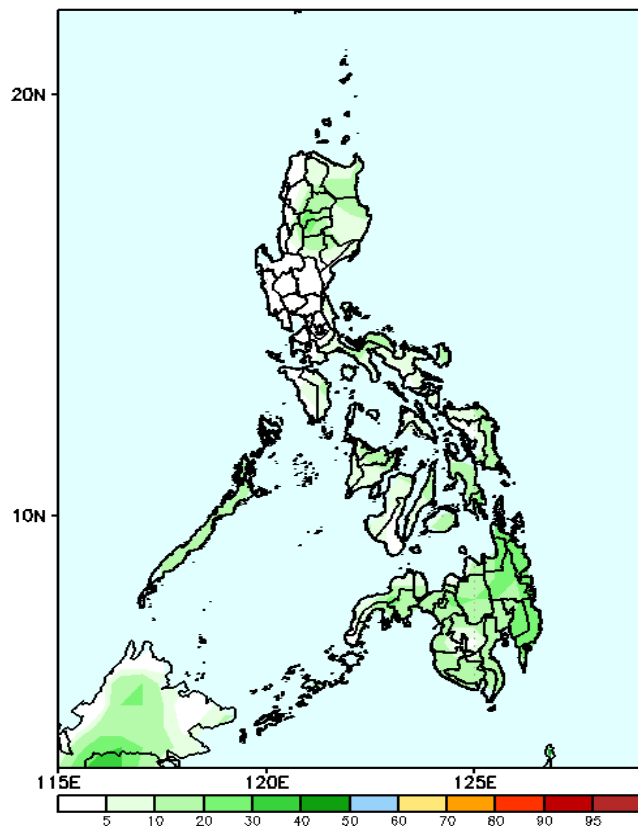
- Moderate to high over CAR and most of Mindanao;
- Low to moderate over the rest of the country.

Exceedance Probability > 100/150/200 mm

- Very high probability
- High Probability
- Moderate Probability
- Low Probability

Week 2: Mar 24-30,, 2025

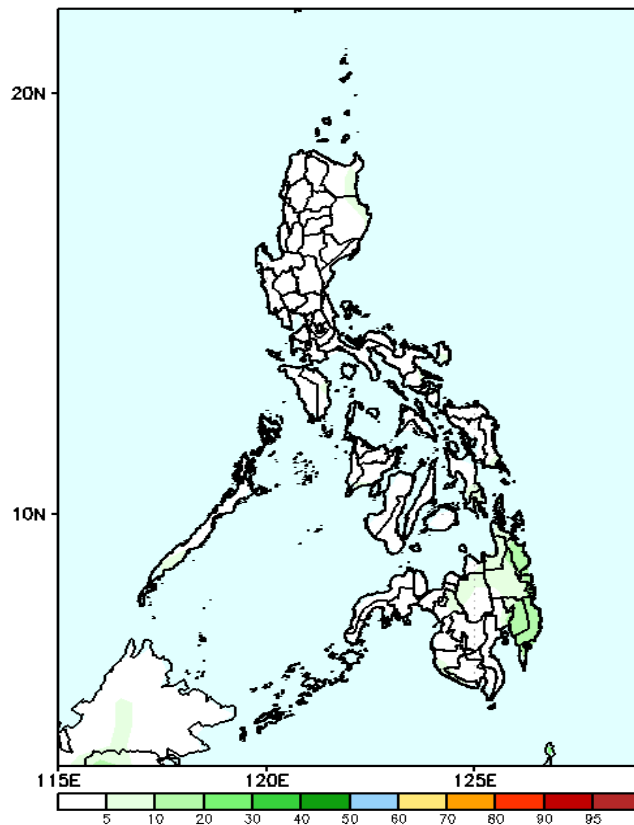
GEFS Week-2 Exceedance Prob. > 100mm
Valid: 20250324 - 20250330



Probability to Exceed 100mm

- Low to moderate over Mindanao;
- Low over the rest of Visayas and Luzon.

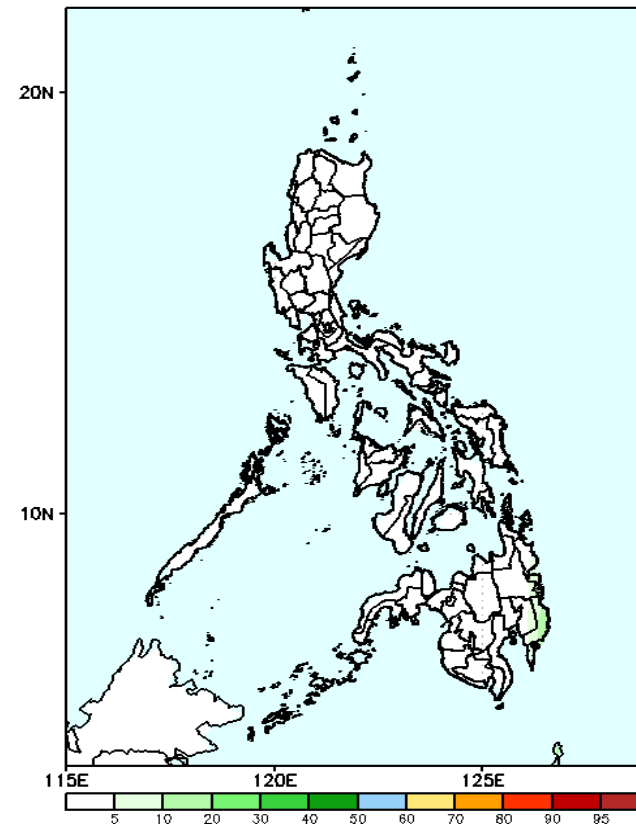
GEFS Week-2 Exceedance Prob. > 150mm
Valid: 20250324 - 20250330



Probability to Exceed 150mm

- Low across the country.

GEFS Week-2 Exceedance Prob. > 200mm
Valid: 20250324 - 20250330

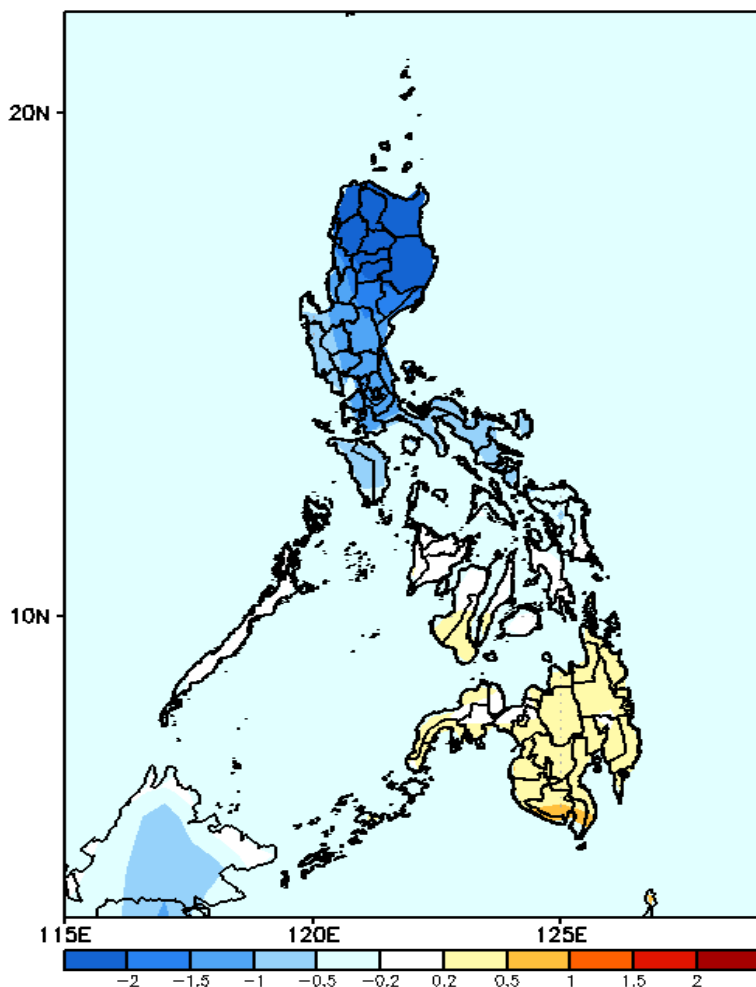


Probability to Exceed 200mm

- Low across the country.

GEFS Week-1 & 2 Forecasts: T2m Anomaly

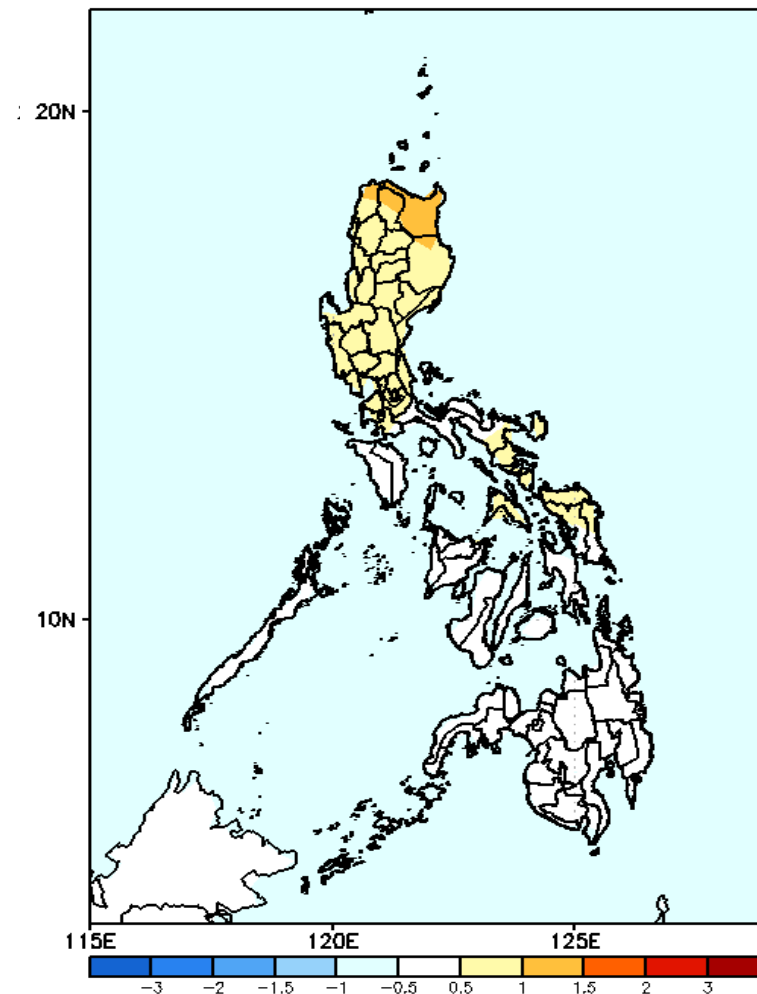
GEFS Week-1 T2m Anomaly
Valid: 20250317 - 20250323



2m Temperature Week 1: Mar 17-23, 2025

Cooler than average surface air temperature will likely be experienced in most parts of Luzon, while slightly warmer than average surface air temperature will likely be experienced for the rest of the country.

GEFS Week-2 T2m Anomaly
Valid: 20250324 - 20250330



2m Temperature Week 2: Mar 24-30, 2025

Slightly warmer than average surface air temperature will likely be experienced over Luzon while for the rest of the country.